

CHAPTER VII COMMUNITY FACILITIES

How well a town functions is often governed by the type and adequacy of community services it provides. This section of the Master Plan identifies existing community facilities of Brookline. Also presented are recommendations to better address deficient areas of service.

As recently experienced by many New Hampshire towns, inadequacy of community facilities is the result of accelerated town growth. New residential, commercial, and industrial growth brings with it a greater demand on existing facilities and requirements for added levels of service. School enrollments increase, greater volumes of waste need to be disposed of, and more calls are made to the town for fire, police, and ambulance services. Town roads require upgrading and extension, as do water and sewer facilities if they exist. Any town is obligated to provide certain community services to its residents and businesses. As town growth takes place, so must the level of community facilities and services provided.

The following chapter outlines existing areas and levels of service provided by the Town of Brookline and anticipated needs to meet existing deficiencies and cover future levels of projected growth. The recommendations at the end of the chapter are based on future growth projections. Should growth patterns be found to differ from what is projected, so must the Town's plan change to meet those different community needs.

This chapter does not provide the financial analysis found in the Capital Improvements Program (CIP), but it does help define the goals and priorities that a CIP is based on, and should be used in conjunction with the CIP when analyzing community facilities. The following facilities and services are examined to determine their capability to meet present and projected future needs:

- Ambulance Service
- Cemeteries
- Fire Protection
- Police Protection
- Public Library
- Public Schools
- Recreation and Open Space
- Solid Waste and Septage Disposal
- Town Office Facilities

BROOKLINE AMBULANCE SERVICE

The following sections look at various aspects of the Ambulance Service, its structure, facilities and equipment.

Personnel

Brookline Ambulance Service consists of a 23-member force that is a mixture of 2 full-time paid attendants and 21 volunteers. With this group, the service is able to provide 24 hour a day, 365 days a year emergency responses. However, this is not an easy task as the Ambulance Service is presently short- staffed on all shifts. To adequately cover all shifts, it is estimated that a volunteer force of 25 to 30 members is needed.

The Ambulance Service is always looking into different ways to get new members and better fill their ranks. The addition of two daytime paid attendants has taken a great deal of the burden off the volunteer members. The day shift has always been the most difficult to cover. With addition of a full time paid director and another full time paid attendant, this is no longer a problem.

The mutual aid agreements between neighboring towns has developed into something greatly beneficial to all involved. Neighboring town ambulance services have joined together into a loose "association" to provide joint CPR and EMT training sessions, emergency methods testing, and local/regional councils to advance their cause. Each neighboring town's ambulance service has within it a core of very dedicated individuals. This core group has and continues to work together for the benefit of all.

Activity

Ambulance service activity from 1990 to 1996 is shown in Table VII-1 and Figure VII-1. The demands on the department have increased dramatically since 1990.

TABLE VII-1
BROOKLINE AMBULANCE SERVICE
ANNUAL ACTIVITY, 1990 - 1996

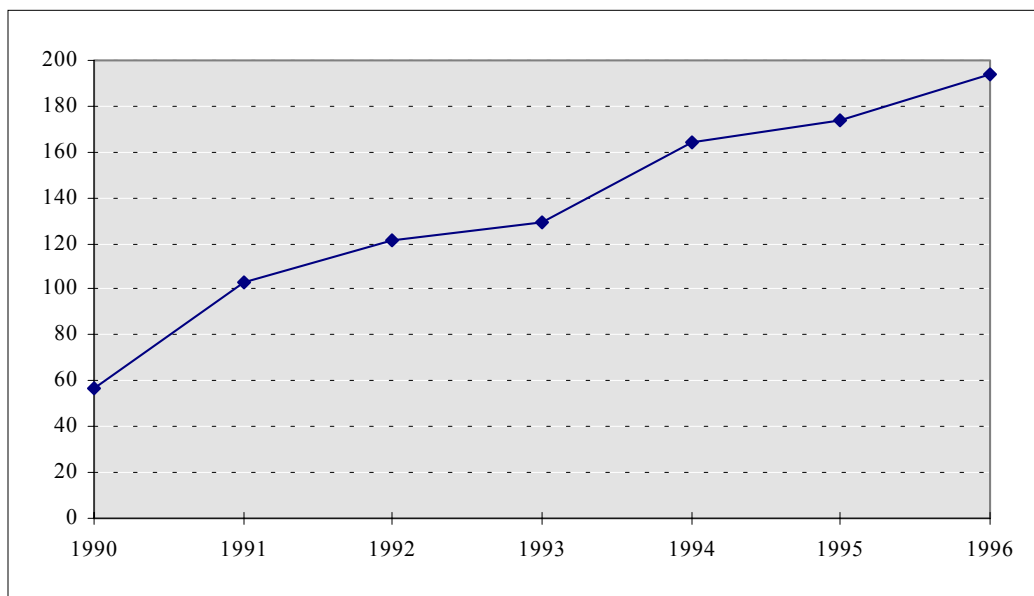
Type of Call	1990	1991	1992	1993	1994	1995	1996
Cardiac/Stroke	11	13	17	11	18	26	20
Falls	N/A*	9	10	10	5	10	19
Fire/Police Standby	1	3	6	14	7	9	10
Home Illness/Injury	10	8	10	12	3	1	4
Mason Calls	N/A**	N/A**	N/A**	N/A**	53	32	46
Medical Transfers	3	9	15	25	15	9	8
Motor Vehicle Accidents	7	9	14	19	11	19	16
Mutual Aid Given	N/A*	6	9	8	2	2	3
Respiratory Distress	N/A*	12	9	3	5	7	5
Other Calls	25	34	31	27	45	59	63
Total Calls	57	103	121	129	164	174	194

* Not reported

** Service begun in 1994

Source: Town Reports

FIGURE VII-1
BROOKLINE AMBULANCE SERVICE
TOTAL CALLS, 1990 - 1996



Emergency Response Time

As with all organizations responding to an emergency, the time it takes for equipment and personnel to reach the scene is critical. The Brookline Ambulance Service average response time is between two and three minutes. This varies with the location of the emergency and the time of day of the call. Factors favoring a short response time include the central location of the station,

the proximity to NH Route 13, and the nearby location of on-call volunteers. After a call is taken, volunteers are paged and through radio and telephone conversations know where to go and what each volunteer is responsible for.

Facilities

Housed in what was once the Brookline Fire Station, the Brookline Ambulance Service benefits from its centrally located headquarters at 4 Main Street (lot F-116) with easy access to NH Route 13 (Map VII-1).

The downstairs of the two-story facility offers two bays for parking the ambulances and some room for equipment storage. There are two rooms upstairs used for meetings, office space, and training sessions. The door to the parking bay initially had to be raised to allow the new ambulance enough clearance to get in. The bays width allows only about one and one half feet of space on either side of the vehicle and about six feet of space at its rear where equipment is stored and loaded from. The space available for storing the ambulance is minimally sufficient at present while the upstairs room is adequate for meeting and training needs. Recent improvements to the facility include new overhead doors in two bays and a new furnace installed in 1991; a third overhead door and emergency generator installed in 1992; a new septic system and off-street parking lot installed in 1993; and renovations to the bay in 1995 to accommodate the new ambulance.

Equipment

The ambulance used for all emergency work is a 1986 Ford Braun and a 1995 Chevrolet Medtec purchased in 1995. As Brookline continues to grow and if there is the increase in the number and type of local and emergency calls as expected with a population increase, additional equipment may be necessary. The Ambulance Service has stated that unless there is a great increase in the number of calls, a third ambulance will not be necessary. Other equipment purchased since 1990 includes a new stretcher, a defibrillator, a CPR mannequin, a pulse oxymeter, an intubation kit, and attendant jumpkits.

CEMETERIES

There are four cemeteries within Brookline. These are listed in Table VII-2. The Cemetery-in-the-Woods is the oldest of these, dating back to at least 1752. Pine Grove and Lakeside both have space available.

**TABLE VII-2
BROOKLINE CEMETERIES**

Name	Location	Lot	Acreage	Status
Lakeside	Mason Rd.	L-13	2.1	Space
Pine Grove	Cross St./Main St.	H-108	10	Space
North Cemetery	Route 13 (west side)	D-39	0.2	Full
Cemetery-in-the-Woods	South of Rocky Pond Rd.			Full

Source: Brookline Tax Records

Currently cemetery plots are restricted to Brookline residents and their relatives, which has translated into low demand for plots; from six to ten lots are sold per year. The land remaining is felt to be adequate to meet future needs.

However, some trees in the Town's cemeteries are dying, which offers an opportunity to clear those trees and re-landscape the facilities. Town officials are currently exploring a new variety of elm which is resistant to elm disease. Since nearly 1/3 of all local burials are cremations, the long-term goal for the cemetery department is the construction of a mausoleum to house the deceased's ashes.

BROOKLINE FIRE DEPARTMENT

Brookline's fire protection service is typical of many rural New Hampshire towns. A community force of residents operate town and department-owned equipment to answer local and mutual-aid fire alarms. Neither totally volunteer force nor full-time paid, the Brookline Fire Department is referred to as "call paid". Fire Department engineers all receive a yearly minimal stipend for being on the force. Volunteers receive an hourly salary for time spent answering calls. The following sections examine various aspects of the service: its structure, its adequacy, and future planning needs.

MAP VII-1

COMMUNITY FACILITIES

Personnel

The Brookline Fire Department relies on citizens coming forth to fill its ranks. The Fire Department is headed by three Town-elected "Fire Engineers". With one elected as the Fire Chief, the three Fire Engineers oversee all operations within the Department. (VIIThe department currently is comprised of twenty-five firemen, three fire engineers, three lieutenants, and a captainVII). This includes personnel training, equipment maintenance, and most important, making sure all fire calls are handled in the most professional and timely manner possible. There are 25 volunteers, which is the self-imposed limit.

Activity

The number and type of fire calls from 1986-1996 is shown in Table VII-3 and Figure VII-2, below. Annual activity has risen substantially during the last decade.

**TABLE VII-3
FIRE DEPARTMENT CALLS
TOWN OF BROOKLINE, 1986-1996**

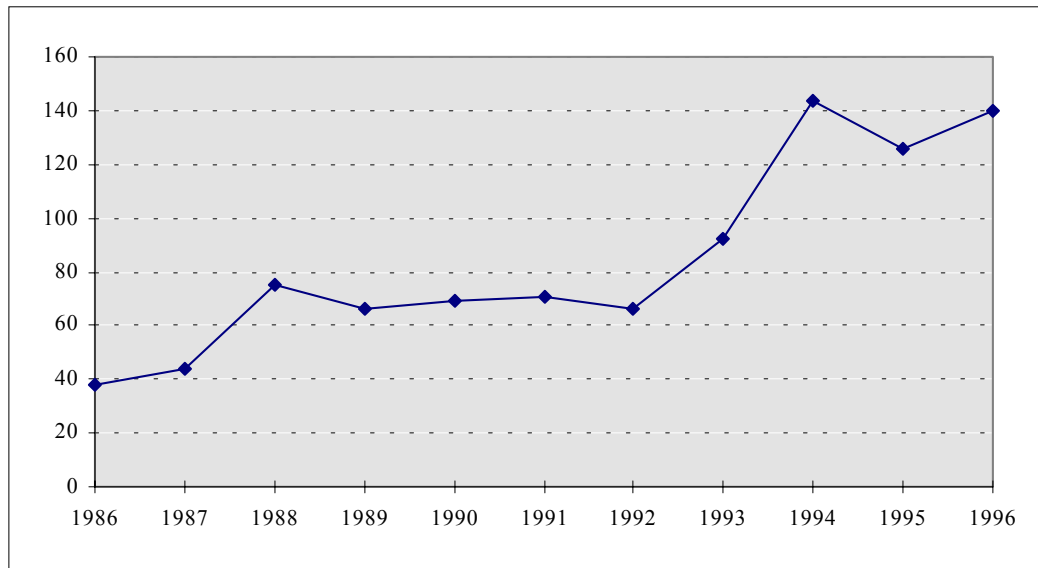
<u>Type of Call</u>	<u>1986</u>	<u>1987</u>	<u>1988</u>	<u>1989</u>	<u>1990</u>	<u>1991</u>	<u>1992</u>	<u>1993</u>	<u>1994</u>	<u>1995</u>	<u>1996</u>
Structure Fire	2	1	9	5	2	4	0	1	3	4	2
Chimney Fire	7	4	5	6	9	7	5	12	11	4	8
Brush/Forest Fire	3	6	12	5	2	0	4	4	3	4	5
Mutual Aid Call	5	10	20	5	15	18	16	16	26	19	26
Auto Fire	0	3	5	1	1	0	0	4	5	3	2
Auto Accident	0	0	0	0	0	5	8	19	10	19	17
Alarm Activations	*	*	18	17	6	2	13	18	21	19	19
Smoke Check	*	*	*	*	*	*	*	6	14	13	7
Illegal Burns	*	*	*	*	1	0	0	0	15	9	4
CO Detectors	*	*	*	*	*	*	*	*	*	9	23
Special Details	*	*	*	*	*	*	*	*	*	13	18
Public Assists	*	*	*	*	*	*	*	*	24	*	*
Gas/Propane/Oil	*	*	*	*	*	*	2	9	7	2	5
Landfill Calls	*	*	*	*	*	*	7	*	*	*	*
Other**	21	20	24	27	33	35	11	3	5	8	4
Total	38	44	75	66	69	71	66	92	144	126	140

* Data not separated out in annual report

** Various categories not itemized before 1993

Source: Town Reports

**FIGURE VII-2
BROOKLINE FIRE DEPARTMENT
TOTAL CALLS, 1986 - 1996**



Facilities

The Brookline Fire Department, shown in the picture below, is on Bond Street (lot H-31) next to Town Hall. The adequacy of the Fire Department is greatly enhanced by its south central location within the Town, and its proximity to NH Route 13 (Map VII-1). The 2,400 square foot facility was built in 1968 to house the Department's expanding fleet of fire fighting vehicles. Before taking over its present headquarters, the Department operated out of what now houses the Brookline Ambulance Service. Between 1979 and 1982, a 1,400 square foot addition was built to provide space for meetings, training sessions, fund raising functions and storage of additional equipment. The new addition also houses the Department's collection of antique fire vehicles which the Town once operated. In 1990, the station's roof was resingled.

Picture VII The Fire Department is located on Bond Street next to Town Hall and has 3 bays.

Space Needs

The Board of Fire Engineers anticipates a need for additional space in the near future. Specifically, the fire department is looking to add a two-story addition consisting of three bays on the basement level for a rescue truck; to move the present kitchen area into the addition; and to add office space, a small meeting room, two showers, and sleeping quarters for the firefighters.

The Fire Station's present location, vehicle inventory, and level of service provided are adequate in offering Town-wide fire protection. New development in both the north and south

portion of Town is adequately covered by the department and a new substation in these parts of Town is not felt to be necessary. However, the rate and magnitude of future development in these neighborhoods will determine the need for a northern or southern substation, which could house one of the Department's "attack" pumper trucks and one of the tankers.

Equipment

The Brookline Fire Department vehicle and equipment roster is included in Table VII-4 below.

**TABLE VII-4
FIRE DEPARTMENT EQUIPMENT**

<u>Year Purchased</u>	<u>Type of Equipment</u>
1995	1,250 Gallons Per Minute (GPM) pumper truck, 1000-gallon tank, 6-man cab
1995	Air compressor to fill air bottles
1994	15 breathing apparatus - 4.5 Scott Air Packs
1991	Air cascade trailer donated, (4) 4500 air bottles
1989	1,000 gallon pumper/tanker truck, 2,500 gallon tank
1984	1,000 GPM hose/pumper truck with 3,000 feet of four inch hose coiled on a 3,600 foot capacity rear, power operated reel.
1979	750 GPM, "attack" pumper truck, 1,000 gallon tank
1969	4-wheel drive forestry pickup
	Two, 250 GPM portable pumps, six portable generators
	Various mechanized saws, (15) 4.5 air packs
	Twenty-five fire fighting bunker gear
	Hose inventory: 4,000 feet of 4 inch hose
	6,000 feet of 2-1/2 inch hose
	2,000 feet of 1-1/2 inch hose
	3,000 feet of 1-1/8 inch hose (Forest Fire Use Only)

All equipment is maintained under the Department's own maintenance program. Each piece of equipment is expected to age out of use rather than wear out before it needs to be replaced. Through Town appropriations and Department fund raising, money for all equipment needs is now being raised annually and set aside in a capital reserve fund. Also, all hose inventories are inspected annually and replaced as needed.

BROOKLINE POLICE DEPARTMENT

Personnel

The Brookline Police force consists of a full-time police chief, a full-time sergeant, two full-time patrol officers, and ten part-time officers. The department has a full-time department secretary / secretary to the Chief of Police. There are two on-call matrons as well who assist with female arrests. Based on the rapid increase in annual activity shown in the next section, the department anticipates the need to hire additional officers in the near future. A request has been made in the 1998 warrant articles for a fifth full-time officer, and the department's goal is to become independent from the Town of Hollis by establishing its own dispatch and hiring its own detective.

Activity

Table VII-5 and Figure VII-3 presents annual totals for the various types of calls the Department has responded to from 1990 to 1996. Total activity has risen steadily during that period.

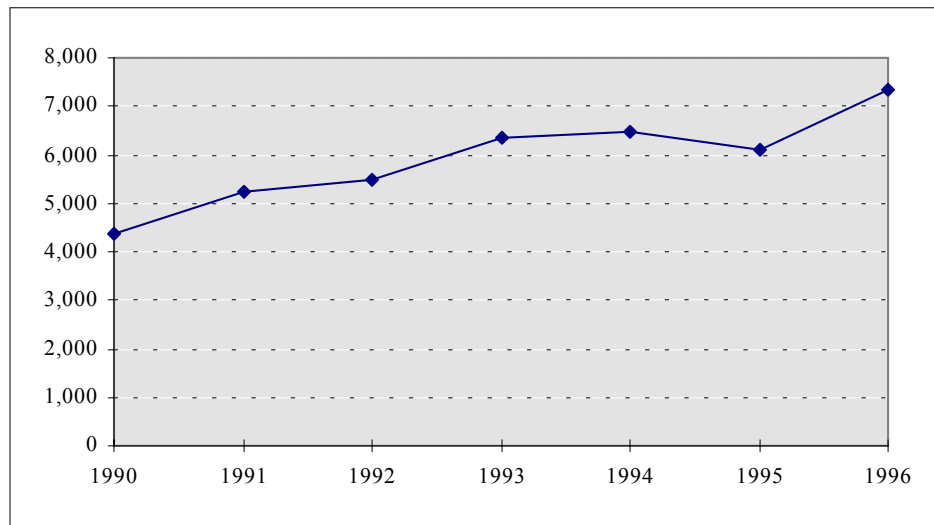
11.

**TABLE VII-5
BROOKLINE POLICE DEPARTMENT
ANNUAL ACTIVITY, 1990-1996**

Type of Call	1990	1991	1992	1993	1994	1995	1996
CRIMINAL ACTIVITY							
Criminal Mischief	68	85	75	53	100	69	103
Criminal Trespass	42	49	38	40	45	36	n/a
Disorderly Conduct	13	12	12	5	16	23	15
Harassment	24	25	29	42	36	50	35
Thefts	55	60	45	57	39	42	37
Other Criminal Activity	61	77	61	79	66	83	75
<i>Total Criminal Activity</i>	263	308	260	276	302	303	265
ARRESTS							
D.W.I.	14	13	16	25	21	41	49
Driving After Suspension	21	11	22	15	13	20	37
Possession of Alcohol / Drugs	10	14	9	21	19	19	65
Protective Custody	21	21	6	24	50	30	26
Transportation of Drugs/Alcohol	n/a	n/a	2	0	8	9	39
Prohibitions	7	8	1	1	3	2	17
Other Arrests	26	27	20	33	27	22	32
<i>Total Arrests</i>	99	94	76	119	141	143	265
NON-CRIMINAL ACTIVITY							
Alarm Activations	78	105	76	118	135	136	139
Animal Complaints	99	92	86	128	75	104	241
Fire Department Assists	24	23	25	37	44	53	51
Medical Assists	23	64	53	47	53	93	104
Mutual Aid Requests	155	162	142	181	246	195	165
Noise Complaints	61	38	50	54	38	48	41
Pistol Permits Processed	73	75	67	96	93	101	16
Police Info. Reports	N/A	N/A	83	103	78	99	92
Police Service Calls	131	162	176	170	168	168	207
Suspicious Persons	33	35	49	48	42	52	49
Suspicious Vehicles	36	38	60	66	69	68	69
Unsecured Properties	30	53	46	50	64	78	43
House Check Requests	80	118	139	136	161	219	200
Other Non-Criminal Activity	369	190	213	299	352	301	361
<i>Total Non-Criminal Activity</i>	1,192	1,155	1,265	1,533	1,618	1,715	1,778
MOTOR VEHICLE ACTIVITY							
Abandoned/Disabled Vehicle	14	34	38	69	82	58	35
Accidents	71	62	62	55	57	69	108
Motor Vehicle Complaints	51	37	52	71	84	94	79
Summons Issued	744	811	935	953	712	764	630
Warnings Issued	1,840	2,656	2,754	3,188	3,411	2,865	4,074
Other Motor Vehicle Activity	103	68	62	72	67	97	89
<i>Total Motor Vehicle Activity</i>	2,823	3,668	3,903	4,408	4,413	3,947	5,015
TOTAL CALLS	4,377	5,225	5,504	6,336	6,474	6,108	7,323

Source: Town Reports

**FIGURE VII-3
BROOKLINE POLICE DEPARTMENT
TOTAL CALLS, 1990 - 1996**



Facilities

The Brookline Police Department facility occupies approximately three-quarters of the basement of the Daniels Academy Building (Town Hall) on Bond Street (lot H-31). Within this area, there is a Chief's office, a Sergeant's office, a conference room, two secured holding areas, a booking room, a secured evidence room, a small closet which houses the main computer system, a small area designated for kitchen purposes, a 3/4 bathroom, and a larger office area where the administrative assistant's desk and the officer's desk as well as all business machines are located. Plans were approved at Town Meeting to replace the Sergeant's office with an administrative office; however, the Town has not yet put this work to bid.

Due to the growth in departmental activity and the corresponding need for an expansion of personnel and administrative space, the department anticipates the need in the near future to relocate to a separate building as the current facility is barely adequate for current operations.

Equipment

Three vehicles are currently used by the Police Department: one 1989 Ford LTD (dog officer vehicle), one 1993 Chevy Caprice, and two 1996 Ford Crown Victorias (the primary patrol cars). The department also has a 1977 Dodge 4X4 pickup which is a military surplus vehicle. Based on current usage, the department needs to replace the police cruisers every two years; it would be preferable to stagger the purchases and replace one vehicle each year.

Departmental office equipment includes eight desks, a copy/fax machine, a WANG main frame computer system with five terminals, two typewriters, seven large file cabinets, two small file cabinets, an older conference room table with chairs, a VCR and TV for viewing training tapes, and miscellaneous office items. The department has requested a personal computer in the 1998 budget and hopes to build a complete modernized computer system in the future.

13.**BROOKLINE PUBLIC LIBRARY**

The Brookline Public Library was founded in 1877, an outgrowth of the Young Men's Library Association of Brookline (1861) and the Social Library of Brookline (1823). The library was originally housed in the rear of the E.E. Tarbell Store. In 1894, the library was moved to the East Room of the Milford Street Village School, and in 1914 moved to the Daniels Academy Building. Within the Daniels Academy Building, the library first occupied the present Library Children's Room, but was later moved to the Selectmen's Office. In 1968, the library was moved back to this location and expanded. In 1992, the Town voted to purchase and renovate the former Methodist Church and Youth Center at 16 Main Street (lot H-59) to provide a dedicated building for Town library space; the new facility opened in 1993. The library is supplemented by the library at the Brookline Elementary School.

Facilities

The Brookline Public Library presently occupies 5,070 square feet of space on two floors. The building met all Americans with Disabilities Act codes as of January, 1992. The Adult Room area is located on the first floor, comprising approximately 3,705 square feet. The Children's Room area occupies the second floor of approximately 1,365 square feet. The building contains two bathrooms (one on each floor) and two kitchenettes (one on each floor) and storage areas. Over 2,022 linear feet of shelving space is provided, as well as a meeting room with seating capacity for 45 people. Eight parking spaces are located in the rear of the building, including one designated handicapped space. The building is fully air conditioned and is gas-heated. A new roof was installed on the building in 1994.

Activity

Table VII-6 shows that the library has nearly doubled its patronage since 1990 and has averaged about 670 new volumes added to its collection each year. This does not include tapes and video cassettes which are also increasing each year.

TABLE VII-6
BROOKLINE PUBLIC LIBRARY
PATRONS AND HOLDINGS, 1990-1996

Materials	1990	1991	1992	1993	1994	1995	1996
Registered Patrons	967	990	1,106	1,301	1,707	1,552	1,709
Volumes in Library	13,746	13,863	14,600	15,501	16,688	17,371	17,760
Magazines	51	61	46	61	61	456**	462
Newspapers	3	3	3	3	4	3	3
Cassettes	247	230	234	136	139	126	149
Videos	108	117	126	145	216	236	284
Books on Tape*	---	---	---	107	113	133	156
Books Purchased	516	617	777	681	708	709	562
Books Received	97	174	78	181	200	217	128
Books Discarded	89	674	52	670	186	162	325

* First purchased in 1993

14.

** 405 obtained from the state

Source: Town Reports

As indicated in Table VII-7 and Figure VII-4, total circulation has nearly doubled since 1990, and is especially strong in children's, video, and audio-visual materials as well as interlibrary loans. However, adult circulation has dropped from its peak in 1994 as has magazine circulation.

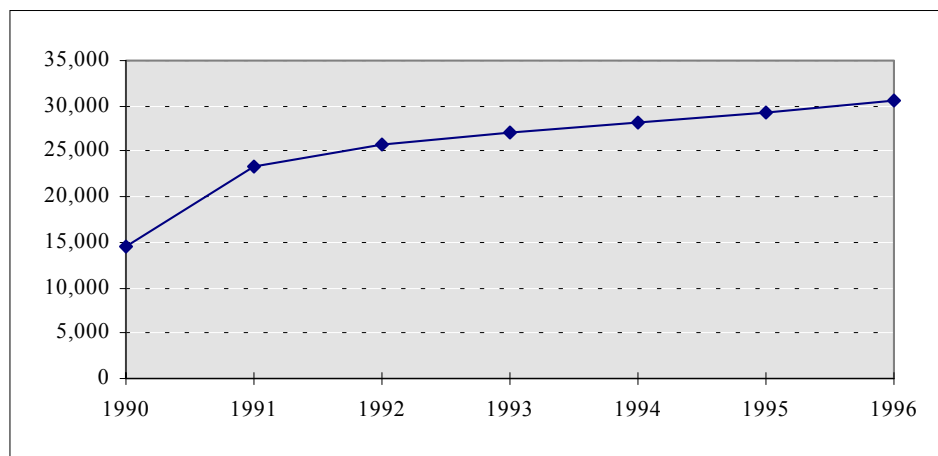
**TABLE VII-7
BROOKLINE PUBLIC LIBRARY
CIRCULATION, 1990-1996**

Category	1990	1991	1992	1993	1994	1995	1996
Adult	5,849	8,450	8,437	8,431	9,643	8,426	8,416
Children	5,440	8,746	12,342	12,324	12,208	12,229	12,725
Magazines	1,643	1,899	2,216	2,043	2,056	2,781	2,582
Videos	1,005	1,677	1,902	2,431	2,335	2,519	2,564
Audio Visual	610	743	869	1,690	1,984	1,923	2,981
Misc.	35	82	55	52	50	509	200
Interlibrary Loan*	610	1,779	832	784	941	829	1,197
<i>Total Circulation</i>	14,582	23,376	25,821	26,971	28,276	29,216	30,665

* Loan figures for all years except 1991, 1995 and 1996 are included in previous categories

Source: Town Reports

**FIGURE VII-4
BROOKLINE PUBLIC LIBRARY
TOTAL CIRCULATION, 1990-1996**



The library is also part of the Hillstown Cooperative and has access to the NH State Library. If the library does not have the book or item requested, most can be obtained through the existing exchange program. Belonging to the Cooperative allows greater purchasing power for member libraries. Purchasing as a group through the Cooperative, a library can obtain up to a 42% discount on the books it buys. Without the Cooperative, a library could only get a discount of up to 25%. This has definitely helped limited library dollars go a lot further in providing materials for its patrons. A computer is being utilized which allows the Brookline Library to

15.

contact the Hillstown Cooperative on interlibrary loans. This computer did not cost the town any funds as it was taken from surplus equipment. Programs can be developed in the future to automate some of the library staff's duties thereby freeing them to provide the library patrons with a greater variety of programs.

Space and Collection Needs

The analysis in Table VII-8 compares the Brookline library with space and collection guidelines recommended by the American Library Association. Brookline's library currently exceeds minimum standards in nearly every category.

**TABLE VII-8
BROOKLINE PUBLIC LIBRARY
COMPARISON TO ALA GUIDELINES, 1996**

	Standard Per Capita	Minimum Standard for Brookline, 1996*	Current Brookline
Total Building Area (sq. ft.)	0.60	1,877	5,070
Magazines	0.01	31	51
Volumes	5.00	15,640	17,760
Volumes added annually to collection	0.20	626	669
Other Standards:			
Linear feet per 7.5 volumes	1.00	2,368	2,314
Staff members per 2,000 population	1.00	1.61	2.00

* Based on estimated 1996 population of 3,128

Table VII-9 uses these standards to determine future library needs based on projected population. The library department foresees no problems over the next 20 years, except in the annual book purchasing power as well as staffing levels.

**TABLE VII-9
CURRENT AND PROJECTED LIBRARY NEEDS
TOWN OF BROOKLINE, 1996-2020**

Year	Projected Population**	Total Building Area (sq. ft.)	Staff Needed	Volumes	Linear Shelf Space (sq. ft.)
1996	3,128	1,877	1.6	15,640	2,085
2000	4,140	2,484	2.1	20,700	2,760
2005	5,135	3,081	2.6	25,675	3,423
2010	5,953	3,572	3.0	29,765	3,969
2015	7,243	4,346	3.6	36,215	4,829
2020	8,279	4,967	4.1	41,395	5,519

* Based on ALA Guidelines

** Office of State Planning Estimates and Projections

Source: NH Office of State Planning (OSP) Population Projections and Estimates, 1997. Numbers based on ALA recommended standards listed above, taken from Nolan Lushington & Willis Mill, Jr. *Libraries Designed for Users, A Planning Handbook*, 1979.

16.Library Staffing

The duties of running the Brookline Public Library are handled by a part-time librarian, two clerks and one assistant, with support from limited aides and the Town's "Friends of the Library" volunteer group. The library is open to the public 30 hours per week: Monday, Tuesday and Thursdays from 2 to 8 p.m.; Wednesday and Friday from 10 a.m. to 2:30 p.m.; and Saturday from 10 a.m. to 2 p.m. Should patron use or demands increase with an expanded library collection, adding a few more hours to the schedule may be desirable to provide greater access to the public and allow the staff to handle the workload.

Equipment

The Library currently has four computers: a 286, IBM 386, Digital 486, and Ditigal pentium; one Brother word processor; and three printers: a 9-pin Datasouth printer, 9-pin Okidata printer, and Okidata 2010 desk jet printer. The public is provided computer access to the N.H. Automated catalog. Other equipment includes a Panafax UF-321 facsimile machine, and a Hayes 2400 band modem.

BROOKLINE PUBLIC SCHOOLSBrookline Elementary School*Facilities*

The Brookline Elementary School is located on Milford Street (lot F-80). In December of 1986, an addition to the school was dedicated which added 27,364 square feet to the pre-existing 13,725 square feet of floor space. Since that time, a number of changes were made to the building: finishing two classrooms in the lower level; a six-classroom addition; relocation of the computer lab to a larger classroom; adding space to the media center (library); and enlarging the kitchen and equipping it for a breakfast and lunch program. Presently the building consists of 20 classrooms, an art room, a music room, a computer lab, a resource room, a gymnasium with kitchen space and two bathrooms, an administrative area with principal's office, a reception area, a nurse's room, a conference room, a teachers' room, and a media center. The student capacity of the building is 500 at a student-teacher ratio of 25:1. The septic capacity of the site is 554 students and 28 staff members. In 1997 the Brookline School District supported the placement of four portable classrooms on the site to meet the growth of Brookline. It is projected that the four additional portable classrooms would be occupied in the 1998-1999 school year.

The school's gym has seen extensive use for youth and adult athletic programs as well as school programs such as the Science Fair, Social Studies Fair, and music programs throughout the year. The number of parents attending the music programs has necessitated the need to split the programs between upper and lower grades. The gym is also the town's primary meeting space for annual meetings.

Currently the Brookline School Board is taking steps to bring a bond proposal to the voters in March of 1998 for a second school building to house the fifth and sixth grades. A Site Committee has been formed to propose locations for the second school. An Educational Specifications Committee has been formed to determine the facility parameters to meet the educational needs of students. The Educational Specifications Committee is also reviewing the

17.

needs of the Town for additional athletic and meeting space, as well as the possible use of the second school as an emergency evacuation center.

The Brookline School Board is planning for the addition of a public kindergarten program. It is the recommendation of the administration and the staff that the program is housed in the current Brookline Elementary School. In preparation for the kindergarten program, the Brookline School District voted in March of 1997 to place \$16,000 in a Capital Reserve Fund to provide furnishings for the kindergarten classrooms. Currently the Brookline School Board is studying a proposal for the addition of two kindergarten classrooms to the Brookline elementary school.

Personnel

In the 1996 school year, the staff consisted of a principal, an assistant principal, nineteen regular teachers, two readiness teachers (including one first-year teacher), one music teacher, one resource room teacher, one computer teacher, one media\reading teacher, one part-time nurse, one part-time physical education teacher, one part-time art teacher, one part-time environmental science teacher, and one part-time guidance counselor.

The elementary school has an active parent-teacher organization which provides contributions to the school for teacher requests, library books, playground equipment, and enrichment programs such as performances, shows, and visiting artists. There is a very active volunteer program in the school which has promoted a positive environment for parent involvement. This is evidenced by the receipt of the Blue Ribbon Award by the New Hampshire Partners in Education for volunteerism in 1996 and 1997.

Hollis Area Junior and Senior High Schools

In 1989, Brookline and Hollis voters agreed to establish a cooperative school district for their joint junior and senior high schools. Starting in the 1991-1992 school year, Brookline students, began attending 7th and 8th grade at the Hollis Junior High facility, and 9th through 12th grad at the Hollis High School facility. Before that time, Brookline participation was on a tuition basis under an AREA agreement between the two towns. In 1997, the new Hollis-Brookline High School opened in Hollis with a capacity of 450 students. The Junior High School moved into the old high school building with a capacity of 420 students. The cooperative school board consists of 5 members, two of whom are from Brookline. Brookline has an ownership interest in the high school physical plant.

Picture VII The Brookline Elementary School, located on Milford St., was completed in 1987.

School Enrollment

The current enrollment of Brookline students in each school is shown below in Table VII-10 and Figure VII-5. Table VII-11 and Figure VII-6 indicate enrollment projections compared to current physical capacity. Capacity is not anticipated to be reached until 2005 in the Brookline Elementary School and 2003 in the Junior High, while enrollment already exceeds the capacity of the newly constructed Hollis-Brookline High School.

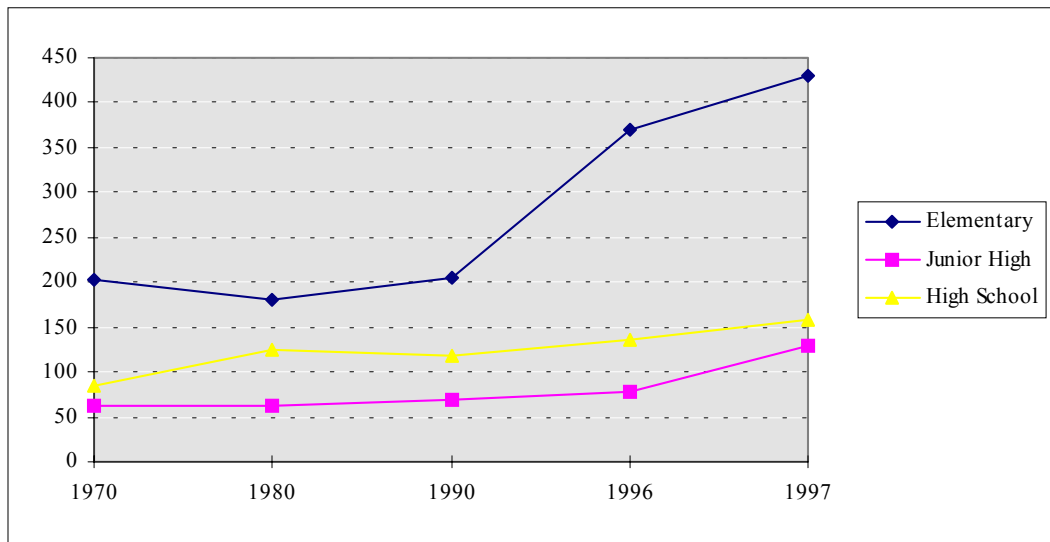
**TABLE VII-10
SCHOOL ENROLLMENT
BROOKLINE STUDENTS, 1970-1997**

Grade	1970	1980	1990	1996	1997
R & 1	30	26	51	77	
2	20	20	32	60	
3	44	31	35	61	
4	37	34	32	56	
5	42	37	35	63	
6	29	32	21	52	
<i>Total Elementary</i>	202	180	206	369	431
7	42	30	42	34	
8	20	33	27	43	
<i>Total Junior High</i>	62	63	69	77	129
9	30	28	24	40	
10	23	33	33	31	
11	17	37	29	37	
12	14	26	32	27	
<i>Total High School</i>	84	124	118	135	158
Total R - 12	348	367	393	581	718

* Enrollments in January of each year, except for 1997 (October)

Source: Superintendent of Schools, Town Reports

**FIGURE VII-5
BROOKLINE STUDENT SCHOOL ENROLLMENTS, 1990-1996**

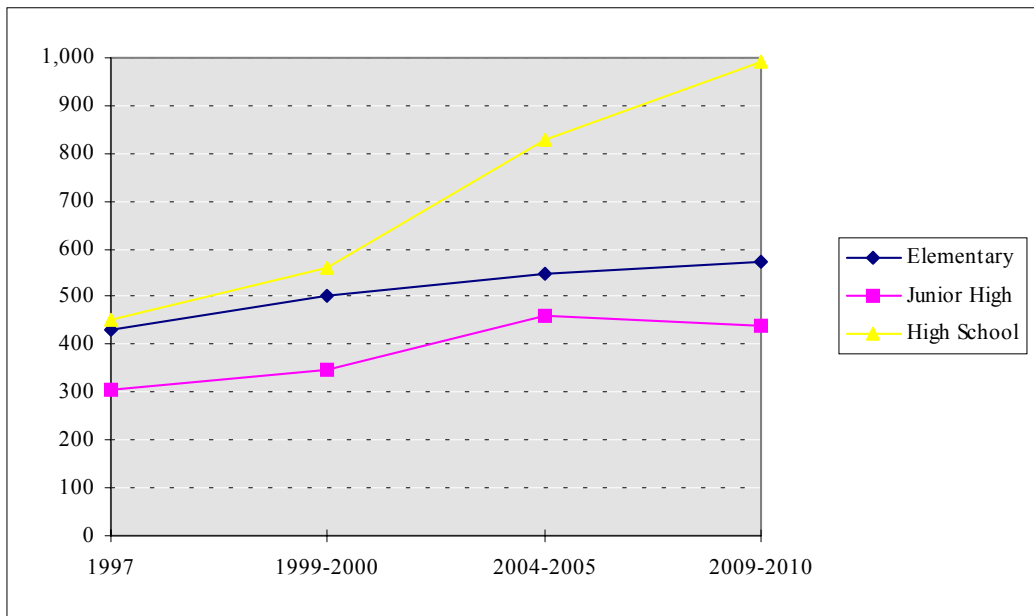


**TABLE VII-11
SCHOOL ENROLLMENT PROJECTIONS, 1997-2010**

	Enrollment As Of			
	October 1, 1997	1999-2000	2004-2005	2009-2010
Brookline Elementary				
Enrollment	431	504	550	572
Capacity	554	554	554	554
% Filled	77.8%	91.0%	99.3%	103.2%
Hollis/Brookline Junior High School				
Enrollment	305	349	459	440
Capacity	420	420	420	420
% Filled	72.6%	83.1%	109.3%	104.8%
Hollis/Brookline Senior High School				
Enrollment	452	559	828	992
Capacity	450	450	450	450
% Filled	100.4%	124.2%	184.0%	220.4%

Source: SAU #41 Offices. Projections made October 1997.

**FIGURE VII-6
SCHOOL ENROLLMENT PROJECTIONS, 1997-2010**



BROOKLINE RECREATION FACILITIES AND CONSERVATION AREAS

Existing Active Recreation and Conservation Areas

By providing recreation facilities and conservation lands, a Town gives its residents a great opportunity to enjoy themselves and the natural resources within the community. Brookline is very fortunate to have areas of forest, open space, and water resources within its boundaries of which residents may take advantage.

Active recreation facilities and public and private conservation areas within Town are listed in Tables VII-12 and VII-13 below and shown on Map VII-2. A brief description of the current state of and future plans for some of the more prominent areas follows.

TABLE VII-12
ACTIVE RECREATION FACILITIES
TOWN OF BROOKLINE, 1997

Name	Location	Lot #	Acres	Facilities
Elementary School	Milford St.	F-80	1.5	Playground, basketball courts, gymnasium, ballpark
Ballpark	Frances Dr.	F-132	6.5	1 softball field, 1 baseball field, small playground
Lake Potanipo	Mason Rd.	---	170	Boating, swimming, fishing, ice skating, winter carnival
Max Cohen Memorial Grove	Mason Rd.	L-35	1.2	Swimming, picnic area, ice skating
Melendy Pond	Route 13	---	19	Boating, swimming, fishing
Talbot-Taylor Wildlife Sanctuary	Cleveland Hill Rd.	G-28	92	Canoeing, fishing
Palmer Land	West of Rt. 13	B-65-11	119.9	Hiking
Skating Rinks	Lake Potanipo & other	---	---	Ice skating
Oak Hill Road Ballpark	Oak Hill Rd.	K-66-43	3.2	1 baseball field
Playground	Mountain Rd.	D-25	2.7	Mixed use field
Park	Woodland Dr.	G-61-30	1.13	Neighborhood park

Source: Town officials

TABLE VII-13
PUBLIC AND PRIVATE CONSERVATION LAND
TOWN OF BROOKLINE, 1997

Lot Number	Location	Acres	Owner
B-65-11	West of Route 13	119.9	Town of Brookline (Palmer land)
B-94	Off Old Milford Road	110.0	Town of Brookline (Morrill land)
B-96	Hood Road	2.2	Town of Brookline
C-11	Off Mason Road	5.0	Town of Brookline
D-18-5	Millrock Road	10.2	Town of Brookline
D-52-53	Wadsworth Road	2.1	Town of Brookline
D-96	Off Bear Hill Road	3.3	Town of Brookline
F-17	Off Rocky Pond Road	36.4	Town of Brookline
G-20	Route 13	2.0	Town of Brookline
J-2	Russell Hill Road	9.1	Town of Brookline
J-33-11	Beaver Pond Drive	8.3	Town of Brookline
J-35	West Hill Road	12.8	Town of Brookline
J-39	Averill Rd.	80.0	Town of Brookline
J-58	Mason line	2.8	Town of Brookline
K-66-18	Cranberry Lane	2.6	Town of Brookline
L-35	3 Mason Road	1.2	Town of Brookline (Max Cohen Mem. Grove)
F-61	Hollis Town Line	5.3	Beaver Brook Associates
G-28	Cleveland Hill Road	70.0	Matthew Sawyer (Talbot-Taylor Wildlife Sanctuary)
H-102	S. Main St.	2.5	Nissitissit River Land Trust
H-146	Off Route 130	1.0	Beaver Brook Associates
H-29	Bond St.	0.7	Nissitissit River Land Trust
H-34	Off Bond St.	0.6	Nissitissit River Land Trust
H-36	Off Main St.	1.8	Nissitissit River Land Trust
H-9	Route 13	1.5	Nissitissit River Land Trust
K-14	Nissitissit River	4.7	Nissitissit River Land Trust
K-42	Nissitissit River	35.1	Nissitissit River Land Trust
K-59	Nissitissit River	2.8	Nissitissit River Land Trust
K-62	B&M ROW	1.2	Beaver Brook Associates
K-91	Oak Hill Rd.	4.0	Beaver Brook Associates
K-92	Oak Hill Rd.	27.0	Nissitissit River Land Trust
K-93	Off Oak Hill Rd.	13.6	Nissitissit River Land Trust
K-94-1	Off Pepperell Rd.	8.5	Beaver Brook Associates
K-95	Off Oak Hill Rd.	84.2	Beaver Brook Associates
K-99	Bohanon Bridge	0.6	Beaver Brook Associates

Source: Tax Records; N.H. GRANIT/LCIP.

MAP VII-2

RECREATION AND CONSERVATION AREAS

Brookline Elementary School Playground

The playground area of the Elementary School covers one and one half acres of the seven acre parcel. Within this area there is a playground equipped with swings, jungle gyms, slides and monkey bars. The area also includes an outside basketball court. Though owned and maintained by the Elementary School, Town resident use is encouraged.

PictureVII At the Brookline Elementary School there is one hard court which has 6 basketball nets.

Brookline Ball Park

Owned and maintained by the Town, the 6.5 acre site provides a baseball field, a softball field, a playground and soccer fields to support the over 400 participants in the youth soccer program. An irrigation system was installed in 1997. There are two utility buildings, and a concessions building with a bathroom. Existing parking currently holds about 50 cars but could be expanded to accommodate nearly 80 cars. There are no plans for further expansion of recreational facilities at this site. A playscape to be installed in 1998 will include slides, a jungle gym, a balance beam and overhead bars.

PictureVII The Ball Park on Frances Drive has 1 softball field, 1 baseball field and a playground.

Lake Potanipo and the Max Cohen Memorial Grove

Providing approximately 170 acres of state-managed surface water to enjoy, Lake Potanipo offers boating, fishing, and swimming to the Brookline community. Any body of water over ten acres in size is considered a "great pond" and falls under State regulations for protection and public access requirements (Melendy Pond is also a great pond). Access to the lake for boating is over a designated right-of-way where a gravel, public boat launching area has been constructed.

Additional recreation use is made of Lake Potanipo from a Town-owned lake-shore park known as the Max Cohen Memorial Grove. Within this 1.5 acre area, there is approximately 0.3 acres for picnicking or day use, with five picnic tables provided. Along the property's 250 feet of

25.

lake frontage, there is approximately one-quarter acre of public beach and one acre of buoyed-off swimming area. A playground facility for children, including a small play structure with two slides and several ladders, was added to the park in 1997. Overflow parking for the Grove is provided across Mason Road.

Laurelcrest Land

The Town's first subdivision approved under the Open Space Development Ordinance included nearly 80 acres of conservation land (lot J-39) between Averill Road and Laurelcrest Road, including a parking area off of Averill Road. Two lots, J-39-45 and J-39-46, totaling 20 acres were also deeded to the Town as common land for residents. A trail exists along the esker on the western edge of the pond on these two lots. Future plans include establishing a trails system on the remainder of the property.

Lot K-66-20 (south side of Oak Hill Road)

This tract of 28.2 acres was donated to the Town of Brookline by Tom and Marge Moran in 1992. Development of this area into its full recreational and conservation potential has taken a back seat to other areas since the gift was made, but could take on more significance to the neighborhood in the future. The shape of the area, although irregular on paper, was deliberate, mainly to accommodate existing and potential trails for walking and horseback activities. The area is accessible from Oak Hill Road, Shattuck Lane, and two locations on Parker Road. Approximately one mile of trail network currently exists leading to and from these locations, but some segments of the network are on adjacent private property. Some clearing and grading is necessary within the lot to keep the trails on Town land, or alternately, easements could be acquired from abutting property owners.

A fairly large swamp exists adjacent to Oak Hill Road Park (described below), but a 25-foot strip on high ground has been established so that a practical foot trail could be built around the whole wetland if desired. There is also significant contiguous acreage on the south end of the parcel which is sloping high ground containing some small streams. This area has a potential for future active recreational use and possible for more intensive purposes. It is also adjacent to land being considered for a new elementary school, and could possess some value in conjunction with this use.

A small area on this lot now serves as a "bonus" back yard for homes adjacent to Shattuck Lane and mid-Parker Road. It is fairly flat and open, and a more formal use such as a tennis court or playground could be added if desired.

Melendy Pond

Town-owned and managed under the Melendy Pond Authority, this 265.4 acres of land and 19 acres of water provides recreation for those leasing the existing camp lots. There are 36 (50' X 75') lots on the property within a 3.1 acre area that are leased out on a long term basis for recreational use only. At present, there are 28 privately-owned structures on lots leased from the Melendy Pond Authority. The owners of the structures pay real estate tax on the structures alone. The yearly rental payments on the lots vary from \$75 to \$110 per year. When leases and options are renewed, an effort is being made to establish a uniform final termination date in the 2020's.

26.

The 19 acres of surface water provide recreation to those who lease camp lots, and to Brookline residents. There is one boat launch area at the edge of the lot and a 30' X 30' sandy beach. No area is provided for parking of vehicles at this launch/beach area. There is another beach area on the opposite side of the lake with 50 feet of lake frontage. This area's use is limited to only the people leasing lots from the Melendy Pond Authority.

The remaining 262.3 acres of land being managed by the Melendy Pond Authority is primarily forest. Currently one trail exists on this land, running up Birch Hill from Old Milford Road.

Morrill Land

Abutting the property managed by the Melendy Pond Authority is a 110 acre parcel of land also owned by the Town (lot B-94). Managed by the Brookline Conservation Commission, the property consists of mostly forest vegetation and no recreation improvements as of yet. Future management considerations could include hiking trails connecting Mountain Road to Melendy Pond and tree management practices. An additional 16 acres abuts this land and Melendy Pond with access to Mountain Road.

The Nissitissit Park

The Conservation Commission has prepared a site plan for the proposed "Nissitissit Park" (lot G-20) which is located across from the Max Cohen Grove. This two-acre parcel of land was purchased in May of 1995. The BCC's site plan includes a graveled parking area, two picnic areas located on each side of the river, a walking trail leading from the Route 13 access point to Potanipo Hill Road and a wildflower park. Fundraising efforts have already begun to replace the former bridge that spanned the river which would create access to the proposed walking trail from the Mason Road side of the property.

Oak Hill Road Park

Oak Hill Road Park is a privately-owned facility of 3.2 acres at the junction of Oak Hill Road and Bohanon Bridge Road. It is a full-size, unlighted softball field with basic team and spectator facilities and a 10-foot high outfield fence. Its primary use is adult softball, currently serving two teams from Brookline in the Souhegan Valley League, and one team from Brookline in the Fossil League. At times when the field is not being utilized for adults, it is made available to girls' softball and Little League, and to local citizens and organizations for activities such as field days and group parties. At times when there is no team play or other organized activity scheduled, the fields is used frequently by children playing pickup games or practicing, and even a few golfers and kite flyers. While not a Town-owned facility, it exists primarily for the benefit of local adult teams that otherwise would be seeking to find playing time on Town fields, thus reducing the demand for public facilities. The site has a little more room for future expansion, which might accommodate facilities such as a tennis court, playground, or horseshoe pits.

Palmer Wildlife Preserve

According to the terms and conditions of Florence Palmer's gift, this property is to be managed by the Conservation Commission for the town, and is to be maintained as an undeveloped tract of land in its natural state. It will, in effect, be reserved in perpetuity as a refuge

27.

for wildlife, a water recharge area and a limited recreational resource. The deed states that hunting, off-road vehicles, and overnight camping will not be allowed. Hiking, skiing and (with the permission of the Brookline Conservation Commission) camping by groups will be allowed.

In 1989, the BCC built the main trail into the Preserve. This trail leads hikers across the Scabbard Mill Brook, up a hill covered with mountain laurel, across submerged and moss-and-fern covered stones to the old railroad bed, which was a spur of the Boston and Maine railroad on which ice, granite and lumber from Lake Potanipo were transported.

The land is comprised of a variety of woodlands and wetlands, conifers, hardwoods, softwoods, streams, a marsh and ponds. It is an important wildlife habitat and serves as a natural watershed and flood control plain (a wetland area capable of absorbing vast amounts of water). Waters from Melendy Pond pass through the Palmer property into Lake Potanipo and eventually into the Nissitissit River. The land has significant natural resource as well as aesthetic value and is a very important asset to the town.

In 1995 and 1996, the BCC undertook negotiations with the Palmer Trust to acquire almost 50 more acres to enlarge the preserve and include the pond and other natural features that needed to become an integral part of the preserve. This land was purchased using monies from the BCC's Land Acquisition Fund. Located on this parcel is an old cabin located near a man-made pond and waterfall. Unfortunately, the severe Winter storm that hit New England in December 1996 caused significant damage in the Preserve. Two large pine trees fell on the cabin, collapsing the roof and the supporting beams. Heavy rains and snowmelt have also destroyed the four footbridges located in the Preserve.

In May 1997, the BCC applied for and received grant monies from the William Wharton Trust for the sole purpose of restoring/enhancing the Palmer Wildlife Preserve. It is the intent of the BCC to transform the cabin into a pavilion-type structure that would be used for environmental education purposes by the local Scout Troops, schools and other interested organizations. The materials presented in the cabin display units would be seasonal in nature and provide helpful information to Preserve visitors in terms of the types of flora and fauna they should expect to see during their visit.

Other future additions to the Preserve include:

- Building a sitting bench at the banks of Scabbard Mill Pond
- Procuring and erecting new trail signs and property boundary markers
- Preparing and publishing a Palmer Wildlife Preserve Trail Guide and Information Brochure
- Procuring and erecting a large bulletin board for the entrance of the Preserve where the trail guides and other pertinent information about the Preserve can be posted
- Purchasing additional property off of Route 13 to create another public access point into the Preserve

Talbot-Taylor Wildlife Sanctuary

Termed Brookline's "best kept secret" by the Town's Conservation Commission, Taylor Pond is a 92 acre parcel of forested/open land and water. Certain rights, easements and interests have been deeded to the Town by the owners. Through a deed-of-dedication process, the owner's

intent is for the Town to develop the area to provide public recreation for Town residents and to protect the natural and water resources of the area. With 70 acres of land and 22 acres of surface water, the area has considerable nature education and wildlife sanctuary potential. The dedicated public right-of-way to the pond and the addition of a future nature trail system will allow public recreation (canoeing, hiking and fishing) to occur within this sensitive conservation area. However, currently the forest is inaccessible, and to gain access it will be necessary to acquire access to Averill Road and/or Mason Road.

Privately-owned Recreation/Conservation Land

In addition to publicly-owned recreational/conservation land, two private non-profit conservation associations own land within Town and make it available for public use:

- **Beaver Brook Association.** Formed to protect conservation lands, the Beaver Brook Association holds title to, and conservation easements on, a number of parcels. The Association owns 7 lots totaling nearly 105 acres in the southeastern portion of Town, as well as various conservation easements.
- **Nissitissit River Land Trust.** Formed to protect natural conservation lands along the Nissitissit River, the Nissitissit River Land Trust owns and manages land areas in both Brookline and Hollis. Within Brookline, the Land Trust owns and manages 10 parcels of land totaling over 90 acres in the southeastern portion of Town.

Camp Tevya, located off of Route 13 and Mason Road (lot E-15), also provides private recreational opportunities primarily for school-age children.

Analysis of Recreational Facility Needs

The NH Outdoor Recreation Plan (1994) outlines a suggested range of recreation facilities standards which can be used in assessing a Town's future recreation needs. Estimates are calculated using recreation facility "standards" generated by the NH Office of State Planning. These standards reflect the "norm" for each type of facility found in NH communities -- as determined through an extensive survey process. As such, they are less "requirements" as they are "indications of average performance" to which a community may be compared. Over- or underabundance of facility may not be cause for alarm; however, a community should assess whether any such surplus or shortfall is justifiable given the recreational preferences of its residents.

Table VII-14 lists common recreation facilities to consider and their respective range of suggested amounts based on a given population size. Based on these suggested standards and Brookline's current population, Table VII-15 compares the Town's existing facilities in 1996 to the suggested range of standards developed for Brookline, resulting in potential Town recreational needs. Table VII-16 shows areas where the Town may be deficient in recreational facilities in future years based on its projected population. This table may be used as a guide in planning to provide the community with recreational opportunities in the future.

**TABLE VII-14
RECREATION FACILITY SUPPLY STANDARDS**

Facility	Units Required Per	Persons Required
	1,000 People	For One Unit
Baseball Diamond	1.10	909
Basketball Court	0.80	1,250
Boating Access	1.80	556
Campsites	13.00	77
Golf Courses	0.04	25,000
Gymnasiums	0.25	4,000
Ice Hockey Rinks	0.05	20,000
Ice Skating Rinks	0.14	7,143
Picnic Tables	8.00	125
Community Parks	6.00	167
Playgrounds	0.50	2,000
Playgrounds (acres)	2.00	500
Soccer Fields	0.16	6,250
Swimming (beach)	0.50	2,000
Swimming Pools	0.14	7,143
Tennis Courts	0.95	1,053
Trails, Hiking (miles)	2.20	455

*Source: State Comprehensive Outdoor Recreation Plan
N.H. Office of State Planning, July 1994*

**TABLE VII-15
ANALYSIS OF EXISTING RECREATIONAL FACILITY NEEDS
BROOKLINE, 1996**

Facility	Current Population Requirements*	Existing Facilities	Current Needs
Baseball Diamond	3.44	4	-0.56
Basketball Court	2.50	2	0.50
Boating Access	5.63	2	3.63
Campsites (acres)	40.66	7.76	32.90
Golf Courses (acres)	18.77	0	18.77
Gymnasiums	0.13	1	-0.87
Ice Hockey Rinks	0.78	0	0.78
Ice Skating Rinks	0.16	0	0.16
Picnic Tables	0.44	6	-5.56
Community Parks (acres)**	25.02	11.53	13.49
Playgrounds	1.56	4	-2.44
Playgrounds (acres)	6.26	13.40	-7.14
Soccer Fields	0.50	1	-0.50
Swimming (beach)	1.56	2	-0.44
Swimming Pools	0.44	0	0.44
Tennis Courts	2.97	0	2.97
Trails, Hiking (miles)	6.88	n/a	n/a

* Based on estimated 1996 population of 3,128

** Brookline (improved) community parks: D-25, F-132, G-61-30, L-35

(other potential parks: D-52-53, D-96, J-33-11, K-66-18)

TABLE VII-16
PROJECTED RECREATIONAL FACILITY REQUIREMENTS
TOWN OF BROOKLINE, 1996 - 2020

	Existing Facilities	Projected Additional Recreational Needs				
	1996	2000	2005	2010	2015	2020
Population*	3,128	4,140	5,135	5,953	7,243	8,279
<u>Facility</u>						
Baseball Diamond	4	0.55	1.65	2.55	3.97	5.11
Basketball Court	2	1.31	2.11	2.76	3.79	4.62
Boating Access	2	5.45	7.24	8.72	11.04	12.90
Campsites (acres)	7.76	46.06	59.00	69.63	86.40	99.87
Golf Courses (acres)	0	24.84	30.81	35.72	43.46	49.67
Gymnasiums	1	-0.83	-0.79	-0.76	-0.71	-0.67
Ice Hockey Rinks	0	1.04	1.28	1.49	1.81	2.07
Ice Skating Rinks	0	0.21	0.26	0.30	0.36	0.41
Picnic Tables	6	-5.42	-5.28	-5.17	-4.99	-4.84
Community Parks (acres)	11.53	21.59	29.55	36.09	46.41	54.70
Playgrounds	4	-1.93	-1.43	-1.02	-0.38	0.14
Playgrounds (acres)	13.40	-5.12	-3.13	-1.49	1.09	3.16
Soccer Fields	1	-0.34	-0.18	-0.05	0.16	0.32
Swimming (beach)	2	0.07	0.57	0.98	1.62	2.14
Swimming Pools	0	0.58	0.72	0.83	1.01	1.16
Tennis Courts	0	3.93	4.88	5.66	6.88	7.87
Trails, Hiking (miles)	n/a	n/a	n/a	n/a	n/a	n/a

*N.H. OSP, Municipal Population Projections, November 1997

Based on these standards, Brookline residents may be in need of additional boating access, campsites, golfing facilities, community parks, tennis courts, and hiking trails. In a survey conducted for the 1989 Master Plan, fifty percent of Brookline households responding felt that the Town had enough park and recreational facilities at that time, while thirty-four percent felt there were not enough facilities. Tennis courts was the most common answer when respondents were asked what the Town could do to improve. This response was followed by developer donations for recreation, an additional children's playground, opening the lake/beach to Town residents, and walking/running/hiking trails.

Conservation Easements

In response to the need for protection of the Town's major wetland and water resource areas, conservation easements have also been sought. In contrast to the outright purchase of land for conservation purposes, a conservation easement is the grant of a property right by the owner stipulating that the described land will remain in its natural state and precluding future development on that land. Known Town conservation easements are listed in Table VII-17.

A total of nine acres of land within the 33 acre South Spaulding Brook Road subdivision on North Mason Road has been deeded to the Town through a conservation easement. The conservation land "buffer" protects both Spaulding and Scabbard Mill Brooks which flow through the property in addition to their adjacent wetland areas. Besides protecting the water/wetland resource, the easement allows public access to the brooks for fishing and hiking along their banks.

Additional conservation easements have been granted within both the Thurston and Millbrook Estates Subdivisions. Within the Thurston Subdivision, (west of NH Route 13 and southwest of Melendy Pond) approximately 1.1 acres of land has been given in a conservation easement to the Town for the protection of Scabbard Mill Brook. The easement extends ten feet along both sides of the Brook and also includes a small area to the rear of the subdivision, adjacent to a stream entering Scabbard Mill Brook to the southwest.

Within the Millbrook Estates Subdivision, (east of NH Route 13 and north of Hood Road) approximately 25.4 acres of wetland area has been given added protection. A conservation easement of approximately 0.9 acres has been given to the Town along Scabbard Mill Brook. Also, approximately 24.5 acres of wetland area has had restrictive covenants attached to all property deeds. The covenants are designed to prevent damage to sensitive wetland areas within each lot that are all inter-connected within the subdivision. As with all conservation easements, the Brookline Conservation Commission has been given the responsibility and authority to enforce any and all provisions of the easements and deed covenants.

TABLE VII-17
MAJOR CONSERVATION EASEMENTS
TOWN OF BROOKLINE, 1997

Name	Lot	Street
John and Nicole Pelletier	B-31-2	Route 13
Millbrook Estates	B-31-5, 6	Mill Brook Rd.
Chellis	B-43-2, 3	Hood Rd.
Thurston Subdivision	B-65-5...7, 12	Route 13
Lakin Road	B-84-1...4	Lakin Rd.
Spaulding Brook	C-10-1...16	Spaulding Brook Rd. / N. Mason Rd.
Scabbard Mill Brook Rd.	D-89-1, 5	Scabbard Mill Brook Rd.
McHowery Subdivision	E-9-20	Connick/McIntosh Rd.
Cropp	E-12...12-5	Dupaw-Gould Rd.
Farson Homes	E-44, 44-1	Russell Hill Rd.
Russell Lyford	F-79-1...3	Milford St.
Kowalski / Frances Drive	F-98-2, 3	Frances Dr.
Matthew Sawyer (Talbot-Taylor)	G-28	Cleveland Hill Rd.
Fresh Pond Realty	G-60-14	Potanipo Hill Rd.
Talbot-Taylor Estates	G-61-4	Taylor Rd.
Chapman Trust	H-77-1, 5	Sargent Rd.
J. Sandra Leonard	J-3-1...4	Russell Hill Rd. / West Hill Rd.
Neil Johnson	J-9...9-2	Averill Rd.
Lorden/Elevations	J-17-1...8	Lorden Ln.
Wallace Brook Estates	J-30-2...4, J-61-37	Wallace Brook Rd.
Pax Builders	J-57-3, 5, 6	Muscatanipus Rd.
Austin Subdivision	K-2-1...6	Cross Rd. / 130
Fresh Pond	K-2-2, 7	Cross Rd.
Flint Meadow Drive	K-19-7...12	Proctor Hill Rd.
Moran / Beaver Brook	K-28-1	Oak Hill Rd.
Nowak / Beaver Brook	K-60	Oak Hill Rd.
Ruggiero / Capt. Douglass	K-83-2, 4	Townsend Hill Rd.

Source: Town files

Other Town-Owned Land

Listed in Table VII-18 and shown on (Map VII-3) is an inventory of other Town-owned land. This land is scattered throughout Town, with much of it vacant. The Town has acquired many of these parcels by tax deed and owner default, and as such many parcels are small, of irregular shape, and/or situated in inaccessible locations. It is recommended that the Town attempt to sell some or all of these lots and use the proceeds to purchase more useful land for Town activities.

**TABLE VII-18
OTHER TOWN OWNED LAND
TOWN OF BROOKLINE, 1997**

Lot Number	Location	Use	Acreage
B-37	E. Hutchinson Hill Rd.	Vacant (rear land)	12.0
B-49	Milford Town Line	Vacant	0.6
B-54	Milford Town Line	Vacant (rear land)	3.4
C-3	N. Mason Rd.	Vacant	0.7
D-18-25	Old Milford Rd.	Fire pond	0.8
D-37	Off Route 13	Vacant (backland lot D-74)	1.2
D-57-7	Birch Hill Rd.	Vacant	7.5
D-91	Off Route 13	Vacant (unbuildable)	0.1
D-93	Birch Hill Rd.	Fire pond	0.3
F-118	Hollis line	Vacant (rear land)	0.6
F-141	6 Main St.	Vacant (unbuildable)	0.3
G-65	Cleveland Hill Rd.	Vacant	0.1
H-43	Main St.	Vacant	0.3
H-70	Proctor Hill Rd.	Vacant (backland)	7.1
H-71	Proctor Hill Rd.	Vacant (backland)	4.0
J-39-45	Laurelcrest Dr.	Vacant (common land)	19.1
J-39-46	Laurelcrest Dr.	Vacant (common land)	1.2
J-54	28 Route 13	Vacant (irregular)	1.8
K-66-20	Parker Rd.	Vacant	28.2

Source: Tax records

**MAP VII-3
OTHER TOWN OWNED LAND**

SOLID WASTE DISPOSAL

Currently, Brookline residents bring their trash to the Town transfer station located on 40 acres on North Mason Road (lot C-12), two-thirds of a mile west of NH Route 13 (Map VII-1). At this facility waste is dumped directly into trailers, compacted, and then delivered to a landfill in Pennacook, New Hampshire. The Amherst landfill, where Town waste was formerly dumped, is in the process of being closed. The handling and disposal of solid waste in Brookline is conducted by the Souhegan Regional Landfill District (SRLD), which also serves the neighboring communities of Amherst, Hollis, and Mont Vernon.

Metals, tires and oil are stored at the transfer facility and the Town must contract periodically for their removal. Stumps are buried at the transfer facility and brush is burned. In 1989, Brookline began a voluntary recycling program at the transfer station. Items which are separated include glass, aluminum cans, newsprint, scrap metal, corrugated, PET plastic and HPDE plastic. The program removes approximately 17 percent of the waste volume by weight; this rate has remained relatively flat since 1995 (Table VII-19).

**TABLE VII-19
RECYCLE RATES
SOUHEGAN REGIONAL LANDFILL DISTRICT, 1995 - 1997***

	1995	1996	1997*
Amherst	23.1%	24.0%	21.4%
Brookline	16.8	17.0	16.2
Hollis	21.7	22.2	19.7
Mont Vernon	14.4	16.8	16.0
All Towns	20.7%	21.5%	19.5%

** Through third quarter only*

Note: recyclables include comingled, newspaper, mixed paper, corrugated paper, and textiles

Source: Amherst Solid Waste Commission

Hazardous materials, manure and empty hazardous containers are not accepted at the Brookline transfer facility or Penacook landfill. Residents and small businesses in the Town of Brookline may discard these materials at the Nashua Regional Household Hazardous Waste / Small Quantity Generator Waste Collection Center, which was opened in 1996 and provides seven monthly collection dates.

Brookline is also part of the Nashua Region Solid Waste Management District which includes eight other communities: Amherst, Hollis, Hudson, Merrimack, Milford, Mont Vernon, Nashua, and Windham. The District was formed at the direction of the legislature, which required all communities in the State, except those with an "approved facility", to join into an inter-municipal solid waste planning district. This District provides administrative oversight and consulting services to the member communities, as well as a solid waste management plan as required by Chapter 149-M. The NRSWMD plan was completed and approved in 1993.

The solid waste volumes generated by the Town from 1995 through the third quarter of 1997 are shown in Table VII-20. In 1996, the Town generated 1,579 tons of solid waste, representing 16 percent of the 9,861 tons of waste processed in the SRLD. Based on the population in that year (3,128 persons), the Town's generation rate was 2.8 pounds/person/day. Brookline's 1996 apportionment to the District of \$103,543 (which includes a tipping fee, transportation costs, capital costs, and the operation of the transfer station) results in a cost of \$66 per ton generated that year for disposal.

TABLE VII-20
SOLID WASTE VOLUMES
TOWN OF BROOKLINE, 1995 - 1997*

	Volume (tons)		
	1995	1996	1997*
Trash	1,282	1,311	1,014
Comingles	92	99	79
Newspapers	97	81	68
Mixed paper (mag., paper)	48	57	28
Corrugated paper	19	26	18
Textiles	4	5	3
Others*	---	---	---
Total	1,542	1,579	1,210

* Through third quarter only

* Batteries, prop. cyl., met. scrap, tires, shingles, oil, demo., appli. comp.

Source: Amherst Solid Waste Commission; Town records

As growth continues, so does the amount of solid waste produced. Table VII-21 and Figure VII-7 shows solid waste volume projections based on the overall 1996 generation rates for each community in the SRLD. Although the generation rate for Brookline contained in the NRSWMD plan was calculated at 2.7, the 1996 figure of 2.8 was used to improve the accuracy of the future projections. As shown, Brookline may generate nearly 4,180 tons per year by the year 2020. At \$66 per ton, the future cost for solid waste management may total \$275,880 by the year 2020.

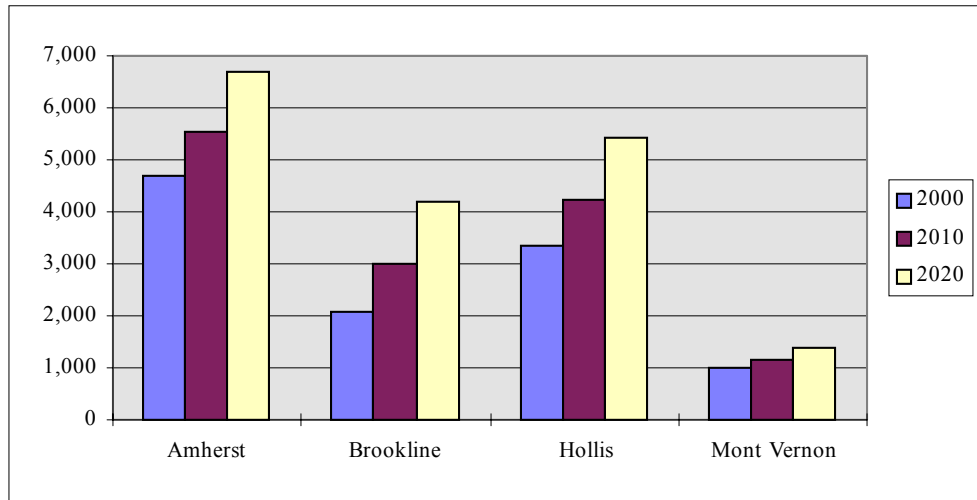
TABLE VII-21
SOUHEGAN REGIONAL LANDFILL DISTRICT
SOLID WASTE VOLUME PROJECTIONS, 2000-2020

	Projected Population			1996 Generation Rate (lbs./person/day)	Solid Waste Volume Projections (tons/year)*		
	2000	2010	2020		2000	2010	2020
Amherst	10,300	12,113	14,686	2.5	4,699	5,526	6,700
Brookline	4,140	5,953	8,279	2.8	2,090	3,005	4,180
Hollis	7,374	9,299	11,940	2.5	3,360	4,237	5,440
Mont Vernon	2,115	2,448	2,978	2.6	993	1,149	1,398

* Volume Projections = (population x rate x 365 days) / (2,000 lbs./ton)

Source: N.H. Office of State Planning Population Projections, October 1997;
Amherst Solid Waste Commission

FIGURE VII-7
SOUHEGAN REGIONAL LANDFILL DISTRICT
SOLID WASTE VOLUME PROJECTIONS, 2000-2020



Currently Town officials foresee no capacity constraints with regard to solid waste collection and processing. However, there is a need in the near future to make improvements to the hazardous waste area at the Brookline transfer station including enhancing the containment features and adding a roof.

SEPTAGE DISPOSAL

Because there is no sewer system in Brookline, residents rely on on-site septic systems for wastewater disposal. These private systems typically use 1,000 gallon tanks and require pumpout every three to five years. Brookline's septage is currently hauled to Milford or Merrimack for treatment at their municipal wastewater facilities. Few problems with existing septic systems in the Town have been reported to date. It is recommended that the Town and Planning Board consider amending the Zoning Ordinance to allow more flexibility in designing and using community septic systems and wells.

BROOKLINE TOWN OFFICES

Facilities

Brookline houses the majority of its Town offices and functions within the Daniels Academy Building (dedicated in 1913) located in the center of Town, at the corner of Bond St. and Main St. (lot H-31) (Map VII-1). The building houses the Police Department, the Selectmen's Office, Planning Board Office, Building Inspector's Office, the Tax Collector's Office, the Town Vault, two meeting halls, a kitchenette, and the Historical Society archives. Renovations to Town Hall were completed in 1993 which provided additional space for town departments and also made Town Hall handicapped-accessible.

The Town Offices are located on the main floor. About 480 square feet of this area is used by the Selectmen's Secretary, Planning Board Secretary and the Assessors. Also located on the main floor is the Building Inspector's office consisting of 120 square feet, the Tax Collector's office consisting of 324 square feet, a work room consisting of 323 square feet, a conference room with a fire rating for 30 people, the kitchenette, and two handicapped-accessible restrooms.

The upper floor of the Daniels Academy Building consists of approximately 1,800 square feet of floor space, with a raised stage area and balcony. The Town Fire Chief has rated the upper hall capacity at 200 people. The upper hall is rarely used except for the theater group, nursery school, and other group activities. The hall is also available for other public functions for a small rental fee. A long-range goal for this room is installing acoustical improvements to facilitate communication at public meetings.

The basement floor of the building houses the Brookline Police Department. Besides the Police Department, the basement floor contains the 36 square foot Town vault and rest rooms.

Equipment

A new computer system was installed in 1991 in the Town offices to record tax collection and voter registration as well as to handle general ledger and check-writing tasks. In 1994, a computer infrastructure renewal program was initiated to gradually upgrade all town computers to windows capability as well as to network all computers. A laser printer was also purchased in 1994.

PUBLIC INPUT AT COMMUNITY PROFILE

At the 1997 Brookline Community Profile (described in the Goals chapter), Brookline residents expressed a number of thoughts about the current state of town facilities and services as well as their desires for future improvements. Some of these diverse and often conflicting opinions are repeated below, which may or may not reflect majority opinion. A copy of the full Profile report is available at Town Hall for public review.

Mosaic: What is Brookline Like TodayVII

No golf course; not enough services; recycling program; good library but not great; no town green or center; good no golf courses; great ambulance and fire service; overburdened dump; high energy costs; power failures; excellent elementary education; no street lights; lots of sports.

Vision: What We Want Brookline To Be Like in the Future

100% recycling; street lights; no street lights; playgrounds; teen pool hall; sports program; our own school system grades 1-12; joint school system; affordable and dependable energy; nature trails; more programs for children; teen center; no pool hall; refurbished Route 130 cemetery; public kindergarten.

Component 2: Informed Citizen Participation

39.

Strengths: Recreation Commission; schools; dump; Town Hall; local cable access station; basketball and soccer leagues.

Concerns: no central location for gathering; few support services for young families and the elderly.

Key issues: teen center; support services for the elderly.

Component 4: Cultural Heritage

Strengths: Friends of the Library; Recreation Commission; Brookline Youth Soccer League; Town beach; softball league; Town Dump; story-telling at the library/Christmas story reading/summer reading program; Co-op school sports.

Concerns: city people that like a rural community but want city services; lack of youth center; lack of summer activities.

Vision: art gallery; community center; more all-ages activities; more access to recreation/conservation land.

Component 5: Education and Social Services

Strengths: Churches work together to provide outreach; library - good; active recreation commission; free ambulance service; high level of dedication of volunteers (ambulance, fire, school); continuity of school and town administrations; shrewd financial management of school and town; strong elementary program.

Concerns: tension between Hollis/Brookline school issues; lack of communication between town reps (planning, school, selectmen, and so on); parents feel insecure about letting their kids play in community.

Vision: make the school the core for more programs in the summer; more sense of security within the community; retain Brookline's own identity and sense of community.

Component 6: Community Infrastructure

Strengths: school in good shape; public offices in good condition; new elevator in Town Hall; library expansion; emergency vehicle expansion along with building; having public buildings accessible to various groups; have ballfields, lake access, playgrounds.

Concerns: unauthorized use of Dump by out-of-town people and businesses; school filled to capacity (can't add to existing school, portables, inadequate acoustics); no services for elderly; no community center; need more street lights in critical/dangerous parts of town; no power substation or underground utility lines.

Vision: required recycling; controlled and limited dumping; power substation; additional school building; better acoustics in school gym; no portables; better street lighting for safety.

Component 7: Natural Resources Base

Strengths: Lake Potanipo; easy access to Lake Potanipo; swimming and boating at Lake Potanipo; Melendy Pond, Nissitissit; recycling; easy accessible for recreation-skiing; big chunks of undeveloped land; Conservation Commission conservation land.

Concerns: rapid land development; dumping; recreational vehicles and overzealous usage; lack of respect of the land; lack of financial resources to sustain natural resources; forest reduction.

Vision: Publish results of annual survey of natural resources; purchase more conservation land and make it accessible like Beaver Brook; increase public input into the Conservation Commission planning; maintain same as it is; environmentally-conscious development; more open space left open for more recreation and conservation.

RECOMMENDATIONS

General

1. The emergency services departments should explore coordinating their activities to ensure maximum efficiency in service to the public. An annual meeting between the departments, the Selectmen, and the Planning Board is recommended.
2. Provide for handicapped access to community facilities.
3. Each Town Department should develop long-term plans for capital equipment needs and include those in the Capital Improvements Program (CIP).
4. Each Town Department should recruit and train staff and reward them with public recognition and adequate resources to perform their duties.
5. All Town Departments should explore leasing equipment instead of purchasing.

Cemeteries

1. The Selectmen should explore the long-term goal of constructing a public mausoleum to house resident remains.
2. The Selectmen should explore the need to re-landscape cemeteries which are suffering from natural deterioration.

Fire Protection

1. The Fire Department should continue to actively participate with the Planning Board and Building Inspector to review subdivision, site, and building plans to ensure adequate fire department access and fire protection for all new and existing developments.
2. The Fire Department should consider developing a policy to address false alarms by automated systems.

41.

3. The Fire Department should explore the feasibility of sharing space with the Police department in a separate building.

Police Protection

1. The Police Department should explore the feasibility of sharing space with the Fire department in a separate building.
2. The Fire Department should consider developing a policy to address false alarms by automated systems.
3. The Selectmen and Fire Department should explore the need for establishing an independent dispatch and detective service.
4. The Selectmen and Fire Department should explore the need to expand staffing levels based on current and anticipated activity.

Public Library

1. The Selectmen and Library Trustees should consider providing additional parking at the library.
2. The Selectmen and Library Trustees should explore the need to expand staffing levels based on current and anticipated activity.

Public Schools

1. Based on currently capacity constraints, the School Board should work towards constructing new school facilities within Town which will comfortably accommodate Brookline's anticipated future growth.
2. Continue the sidewalk program to link all schools to the nearby area. Sidewalks should be provided within the radius around a school in which students are required to walk.
3. As the Town grows, the Selectmen and School Board should consider providing for the schooling needs of all Brookline school-age children.
4. The School Board should continue to utilize school facilities as a "town center" focal point for youth activities, especially in the Summer.

Recreation and Conservation Facilities

1. The Recreation Commission should develop a coordinated, long-range recreation plan which will provide for the support, expansion, and improvement of park and recreational facilities within each neighborhood in Brookline.
2. The Conservation Commission should coordinate and publicize the Town's open space and easement location throughout the Town.

3. The Town should establish a land acquisition policy so that a coordinated effort can be made to acquire land when it becomes available.
4. Town officials and the Melendy Pond Authority should work together to evaluate the present status of Melendy Pond property and to develop long-range plans for its future use to maximize benefit to the Town.
5. The Conservation Commission should establish a Town-wide recreational trail system for community use.

Solid Waste

1. The Town should continue to develop a long-term cost-effective form of waste disposal which will meet local, state and federal requirements.
2. The Planning Board should amend the Zoning Ordinance to allow greater flexibility in the design, construction, and usage of community septic systems and wells.
3. The Selectmen should assess the economic implications of the current method of recycling and assess the need to expand this program.
4. The Selectmen should consider making containment and roofing improvements to the hazardous waste area at the Brookline transfer station.

Town Facilities

1. The Selectmen should continue to evaluate the need for an expansion and/or improvements to Town facilities.
2. The Planning Board and Selectmen should identify and sell small town-owned parcels of land which offer marginal public benefit and use the revenue to purchase a tract of land that will meet a top-priority need of the Town and its residents.